

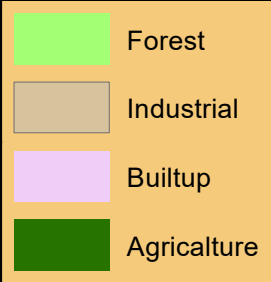
Landuse for Al- Doha and Dheisheh Camp



**Palestine
Polytechnic
University**

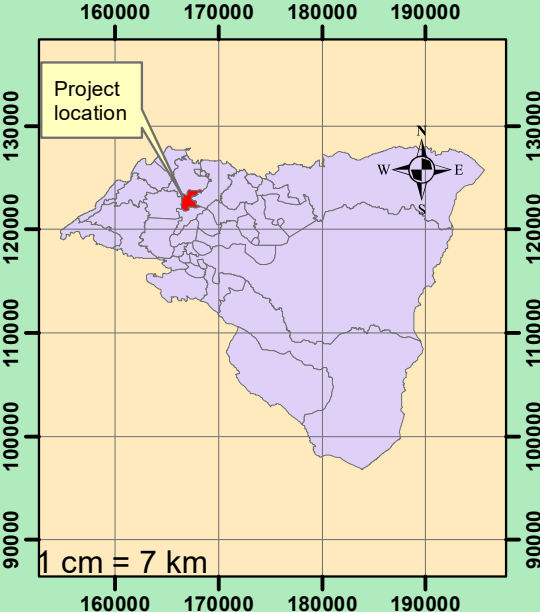
**Palestine Polytechnic University
College Of Engineering and
Technology**

Project Title:
Flow Transient Analysis for
AD Duheisha Pumping Station
and the Conveing Pipeline to Al Doha
reservoir Using Hammer_Cad



Created By :
Mustafa Dwekat
Hamza Hraishat
Mohammed Jomma

Project Supervisor:
Dr-Eng. Itissam Abuiziah



Palestine_1923_Palestine_Grid
Projection: Cassini
False_Easting: 170251.555
False_Northing: 126867.909
Central_Meridian: 35.21208055555556
Scale_Factor: 1.0
Latitude_Of_Origin: 31.73409694444445

Fig.Number(3.7)

